

The logo consists of the letters 'SL' in a bold, white, sans-serif font, centered within a dark square.

Stefan Lochmann

Portfolio Illustration [Comic - Cartoon]

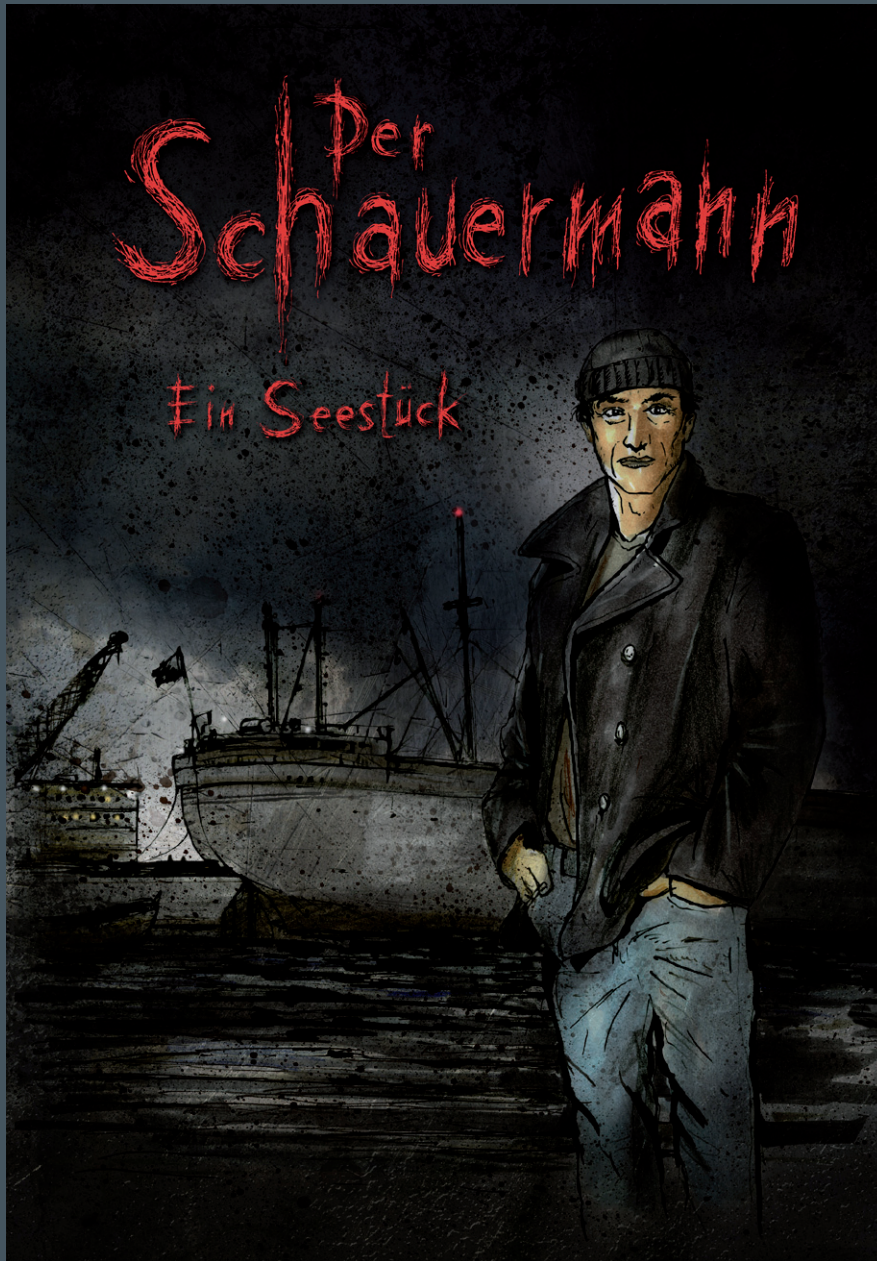
Stefan Lochmann
SL-Design
Bahnhofstraße 40
65185 Wiesbaden

Tel.: ++49-611-30 81 630
Mobil: ++49-171-34 93 701
E-Mail: sl@sl-design.de
Web: www.sl-design.de



Digitale Comicillustrationen





Graphic Novel „Der Schauer mann“, Mischtechnik



SOLAR SUPERHEROES

I COULD SEE – MANY OF US COULD – THE HAVOC BEING WREAKED BY COAL: HIS BIG, FILTHY FOOTPRINTS, NOXIOUS AND GASSY, SCORCHING THE EARTH; HIS POWER INCREASING, FEEDING ON OUR RISING ENERGY DEMANDS. FOR YEARS, WE WORKED FERVENTLY TO DISPLACE OUR GROWING, DIRTY, RELIANCE ON HIM. IT WASN'T UNTIL 2015, THOUGH, WHEN THE TECHNOLOGIES ALIGNED, THAT WE WERE PRESENTED WITH A TRULY VIABLE ALTERNATIVE.

I KNEW THEN WHAT I HAD TO DO. FOR 2015 WAS ALSO A TURNING POINT: SEVERE WEATHER ROCKED THE GLOBE; SPECIES WERE UNDER THREAT; PEOPLE WERE HUNGRY FOR ENERGY, ALWAYS MORE ENERGY; AND COAL WAS TURNING TO NEW MARKETS, DIGGING EVER DEEPER INTO HIS MIGHTY RESERVES.



PROFESSOR GREEN

2030: PROFESSOR GREEN RECALLS THE GATHERING OF HIS CHOSEN SOLAR SUPERHEROES; AND THE LEAD UP TO THEIR FIRST, ELECTRIFYING, BATTLE.

THE TECHNOLOGIES – THE SOLAR SUPERHEROES – HAD TO CONVERGE, JOIN FORCES, TIME TO DRIVE COAL BACK UNDERGROUND. IT WAS NEVER GOING TO BE EASY, CONVINCING THEM TO WORK TOGETHER, THEIR PERSONALITIES SO TERRIFYINGLY DIFFERENT. BUT THEY – WE – DIDN'T HAVE A CHOICE...



COAL

OVER MANY YEARS, FLASH HONED AND PERFECTED HIS LED FLASHING TECHNOLOGY. I OBSERVED HIM IN HIS NATIVE HOMETOWN OF SANTIAGO, ENERGIZING WHOLE COMMUNITIES, FIGHTING TO KEEP POLLUTION AT BAY, HIS RAINBOW LASERS HEALING AND PROTECTING. HE WAS POWERFUL AND WIELDED HIS INFLUENCE, IN THE MAIN, FOR THE GREATER GOOD.



FLASH

ALONE, HOWEVER, HE COULD NOT SLAY THE DIRTY DEMONS; THE SMOG CONTINUED TO BUILD, CHOKING THOSE IT SMOOTHERED. HE GREW FRUSTRATED, BORED, ARROGANT. HE FORGOT HIS ORIGINAL IDEOLOGIES. HE NEEDED TO BE REMINDED.



WITH UNWAVERING STRENGTH AND FLEXIBILITY, SILVER MAZE HAD AN ELECTRIFYING TOUCH AND HAD LONG TURNED HER POWERFUL YET DELICATE TOUCH TO MAKING PRODUCTS THAT WOULD GREEN THE EARTH. AND THE END RESULTS WERE ALWAYS A SIGHT TO BEHOLD.



SILVER MAZE



SHE WAS A PERFECTIONIST, BUT SHE LANGUISHED ALONE; HER POWERS GREAT BUT IN ISOLATION SHE REMAINED UNFULFILLED.

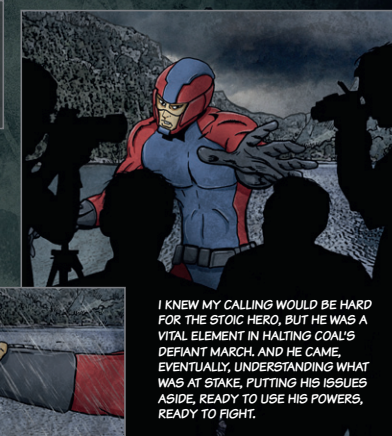
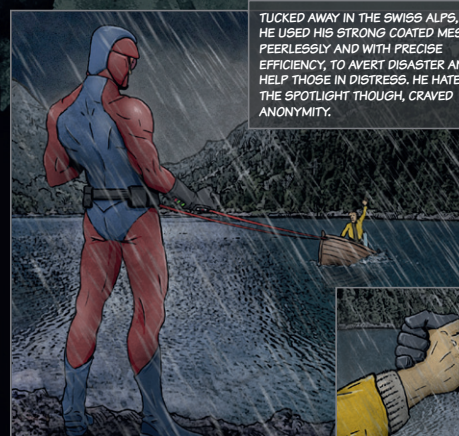
I REACHED THE MYSTERIOUS CREATURE JUST IN TIME; COAXED HER FROM HER LONELY, DAZZLING SHELL, AND BROUGHT HER INTO THE FOLD OF THE SOLAR SUPERHEROES.



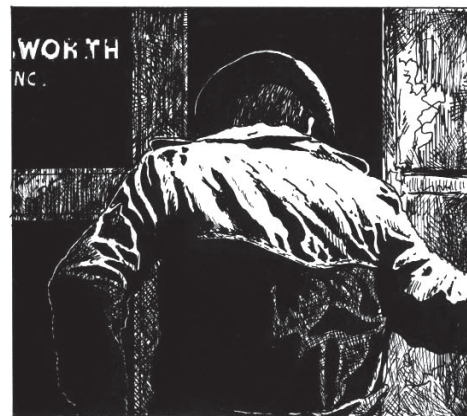
WIRE MESH

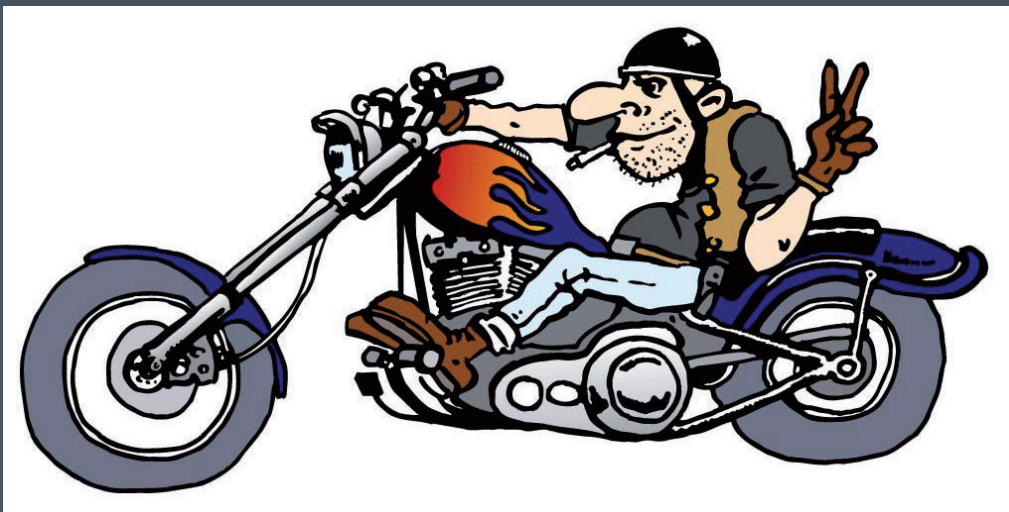
WIRE MESH IS AN INTRIGUING ONE.

TUCKED AWAY IN THE SWISS ALPS, HE USED HIS STRONG COATED MESH PEERLESSLY AND WITH PRECISE EFFICIENCY, TO AVERT DISASTER AND HELP THOSE IN DISTRESS. HE HATED THE SPOTLIGHT THOUGH, CRAVED ANONYMITY.



I KNEW MY CALLING WOULD BE HARD FOR THE STOIC HERO, BUT HE WAS A VITAL ELEMENT IN HALTING COAL'S DEFIANT MARCH. AND HE CAME, EVENTUALLY, UNDERSTANDING WHAT WAS AT STAKE, PUTTING HIS ISSUES ASIDE, READY TO USE HIS POWERS, READY TO FIGHT.

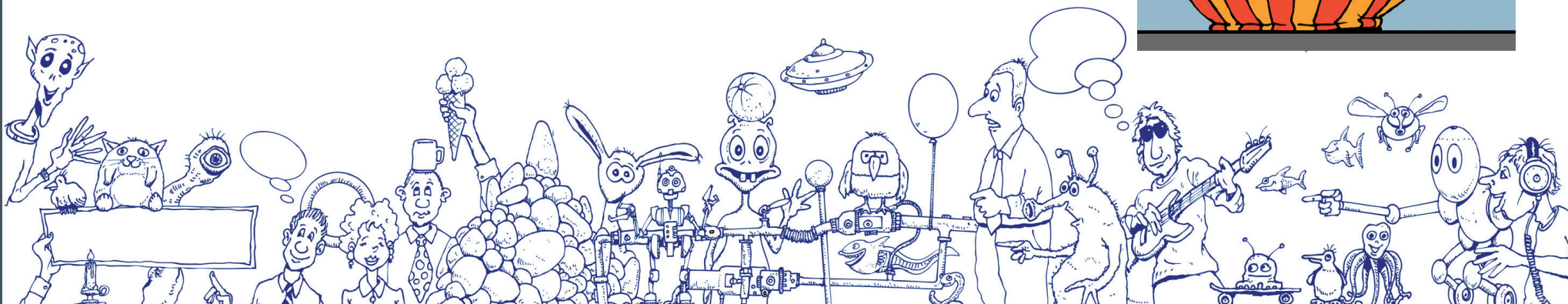




Comicillustration, Mischtechnik



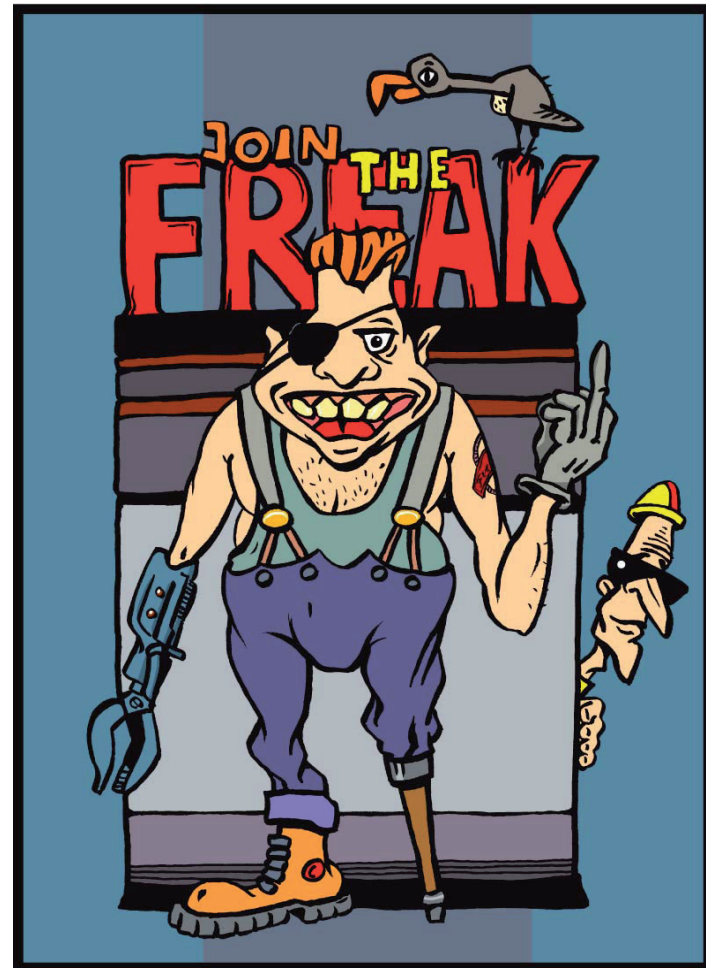
Digitale Comicillustration



Auftrags-Doodles, Mischtechnik



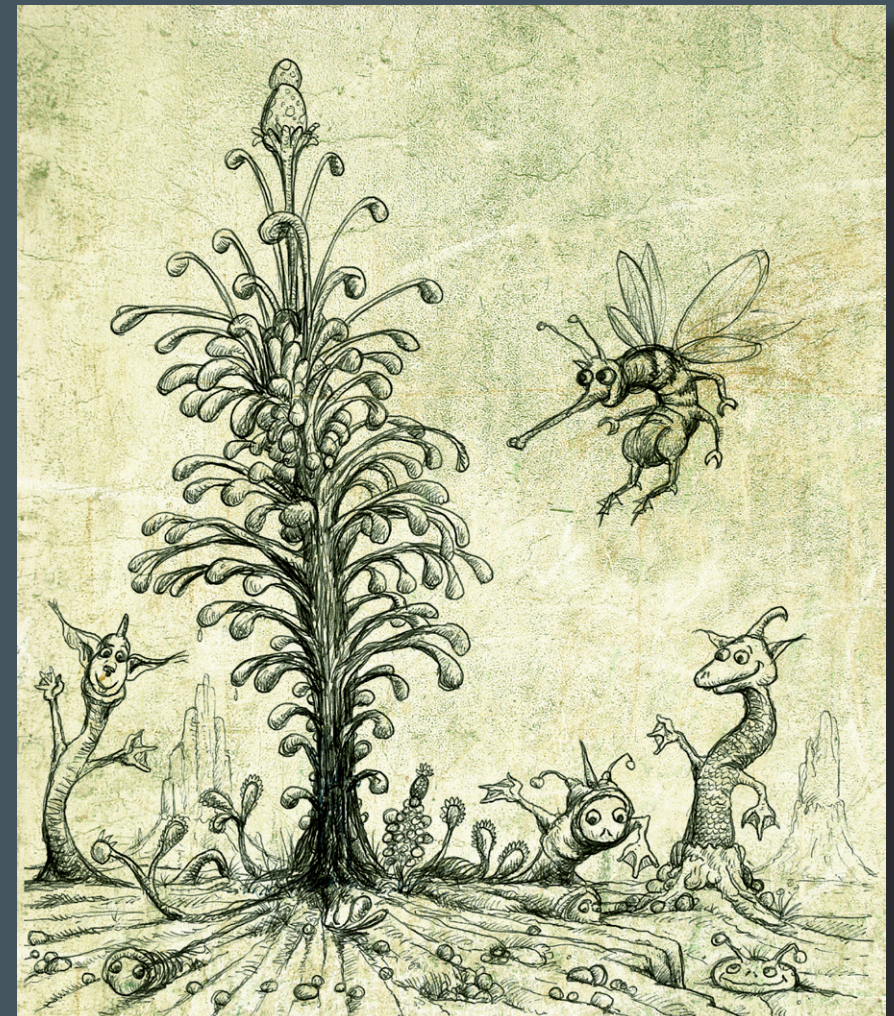
Comictitel, Mischtechnik



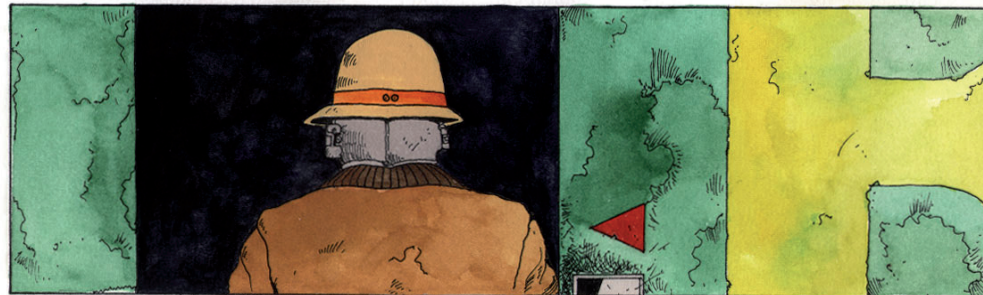
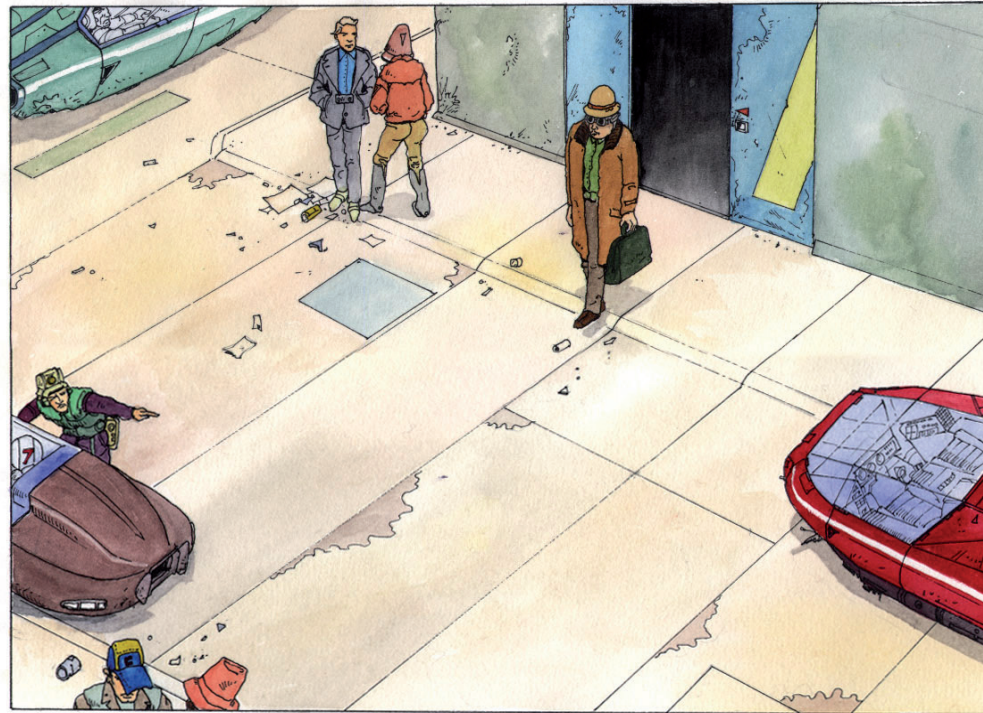
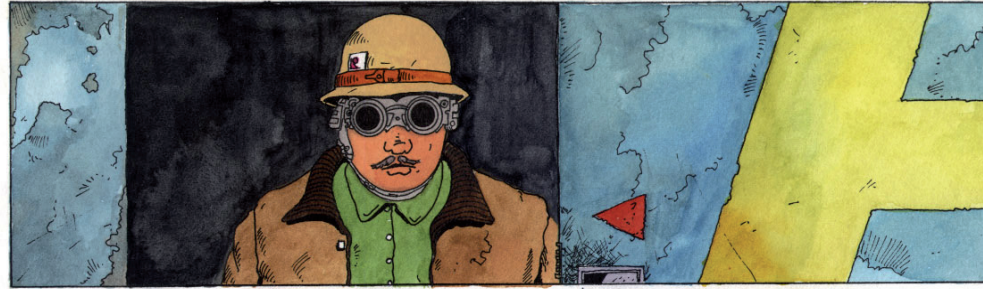
Comictitel, Mischtechnik



Werbecomic, Federzeichnung



Skizze

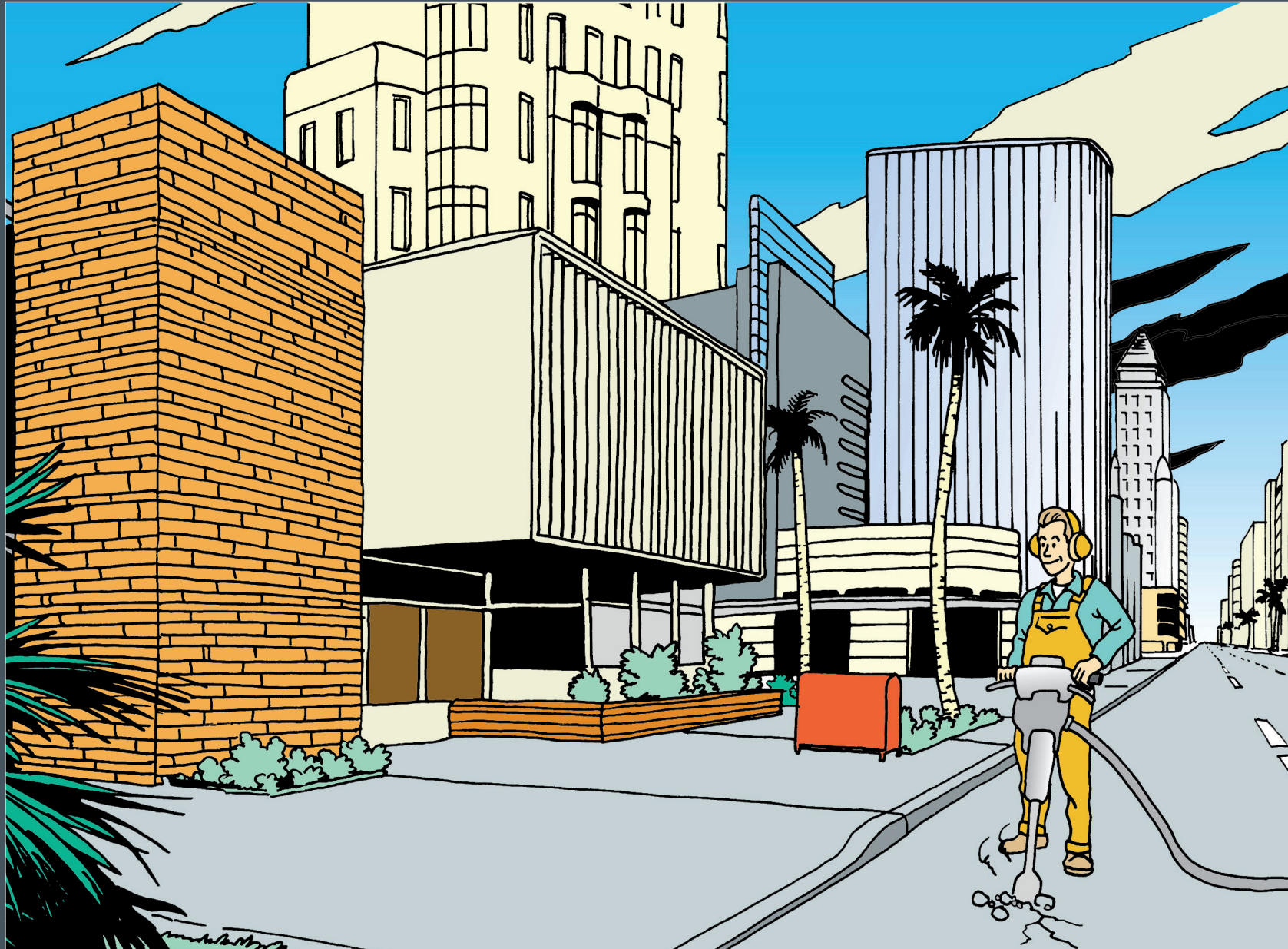




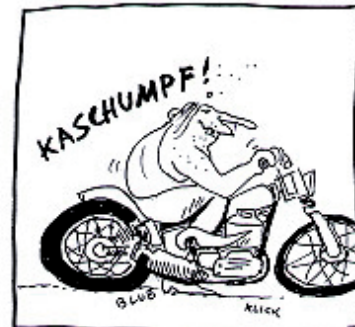
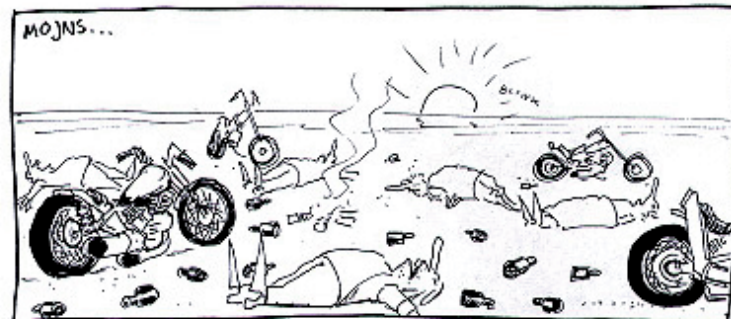


„Entschuldigen Sie bitte die kleine Unterbrechung ...“





Comicillustration Mischtechnik



ERSMA'N TASS KAFFE





Digitale Comicillustration

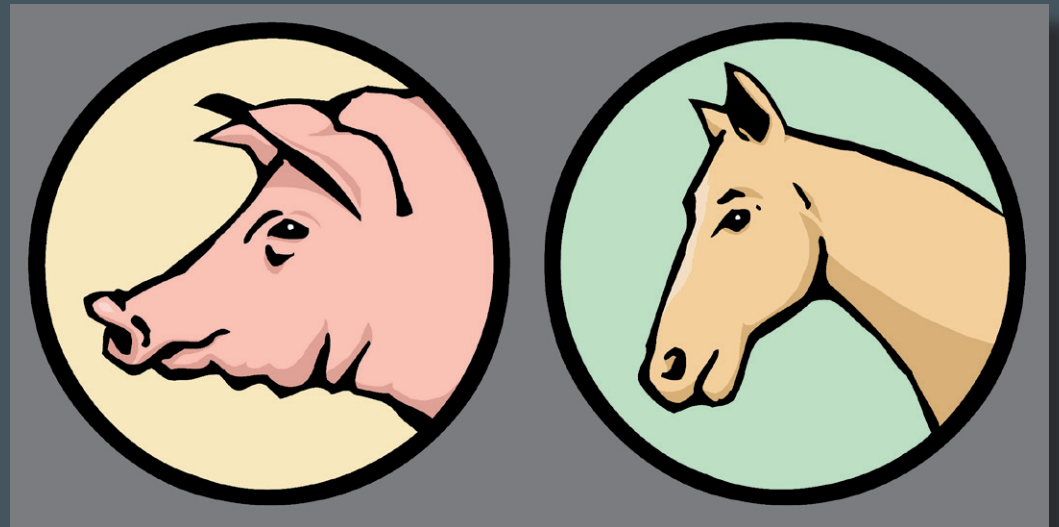


Analoge Comicillustration





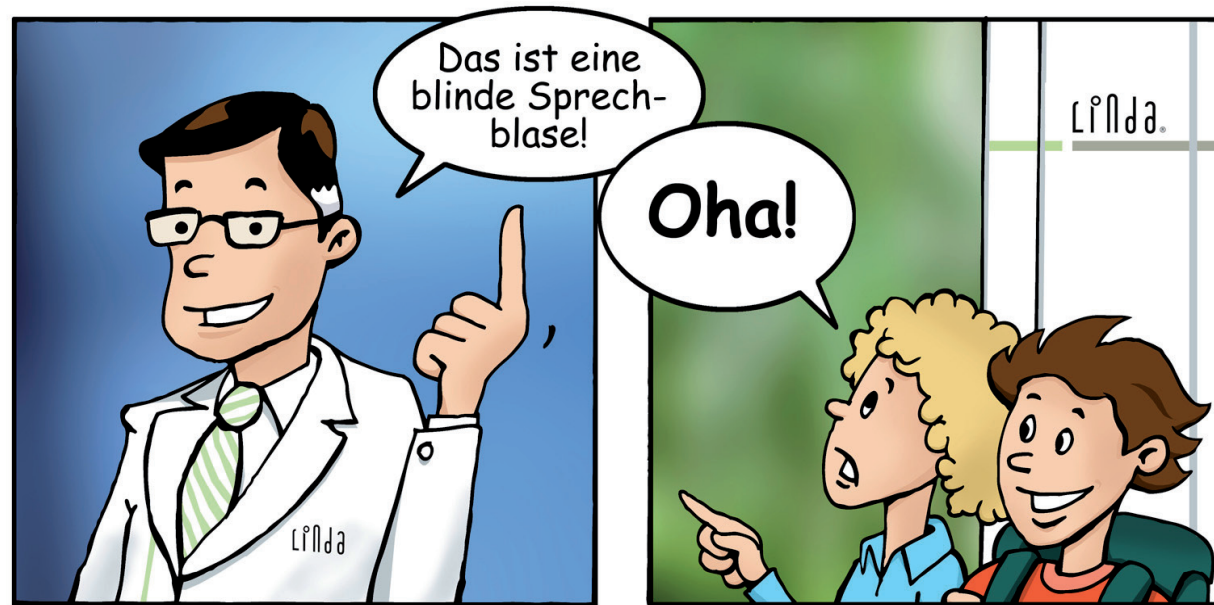
Comicillustration, Mischtechnik



Vignetten, Mischtechnik



Comicillustration, Federzeichnung (nach Moebius)



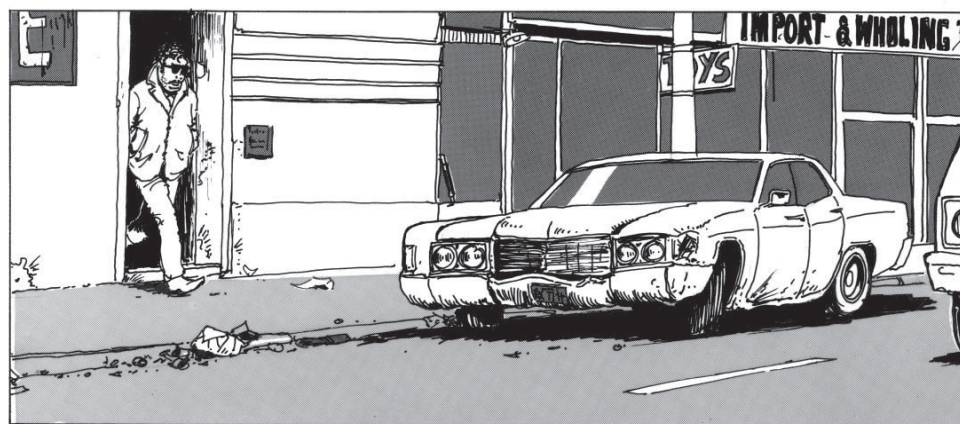
DER WEG

EIN ABENTEUER



MIT JIM BAXTER

VON
STEFAN LOCHMANN





Comic, Federzeichnung



Comicstrips, Mischtechnik

